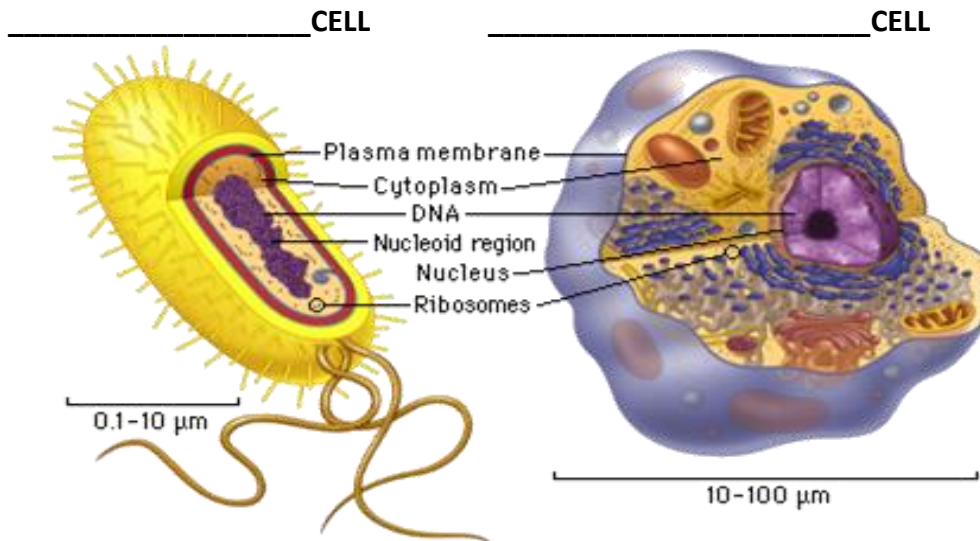


WORKSHEET

PROKARYOTIC AND EUKARYOTIC CELL STRUCTURE

TASK 1. Indicate the cell type. Watch the video and fill in the table by matching the cell characteristics to the particular cell.

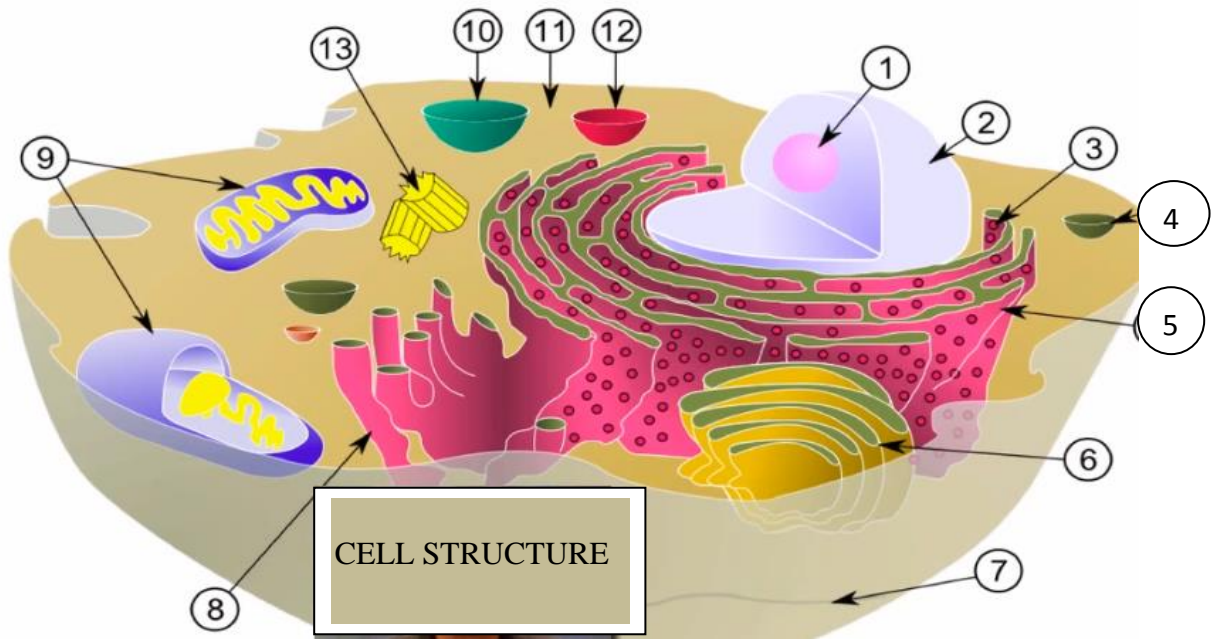


Bacteria and cyanobacteria	<u>prokaryote</u>
All other cells	<u>eukaryote</u>
No nuclear	_____
True nuclear	_____
Lack membrane-bound organelles	_____
Possess subcellular organelles	_____
Evolve from much smaller prokaryotic cells	_____
Contain DNR	_____
DNR is visible as a long irregularly shaped molecule	_____
DNR is packaged together with special proteins, called chromosomes	_____
Specific number of chromosomes	_____
Cell membrane, cytoplasm and various organelles	_____
Have ribosomes and make proteins	_____

EXTRA TASK. Ascribe the cell characteristics to either plant or animal cell:

Only have a plasma membrane	PLANT	Plant cells that photosynthesis
Glycogen		Starch
Small temporary vacuoles sometimes found	ANIMAL	Surounded by the membrane called the tonoplast
Able to change shape		Fixed shape
Alonge with the inner plasma membrane		

HOMEWORK TASK:



Homework task:

1. Indicate cell parts using the picture above.
2. Watch the video *A Tour of the Cell* and take notes of 4 new facts or terms that you will learn from the video.

1. _____	2. _____
3. _____	4. _____
5. _____	6. _____
7. _____	8. _____
9. _____	10. _____
11. _____	12. _____

Fact/ term 1

2

3

4

